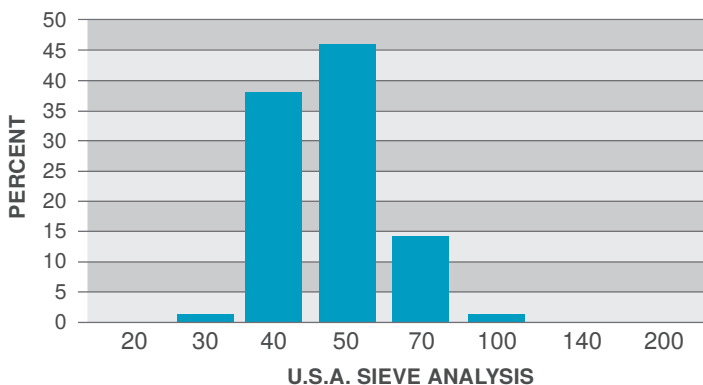


CRYSTAL

WHOLE GRAIN SILICA

PLANT: OTTAWA, ILLINOIS

TYPICAL VALUES
(% RETAINED ON SIEVE)



| U.S.A. STANDARD SIEVE SIZE | | TYPICAL VALUES | | |
|----------------------------|-------------|----------------|------------|------------|
| | | % RETAINED | | % PASSING |
| MESH | MILLIMETERS | INDIVIDUAL | CUMULATIVE | CUMULATIVE |
| 20 | 0.84 | 0 | 0 | 100 |
| 30 | 0.59 | 1 | 1 | 99 |
| 40 | 0.42 | 38 | 39 | 61 |
| 50 | 0.30 | 46 | 85 | 15 |
| 70 | 0.21 | 14 | 99 | 1 |
| 100 | 0.15 | 1 | 100 | 0 |
| 140 | 0.11 | 0 | 100 | 0 |
| 200 | 0.07 | 0 | 100 | 0 |
| PAN | -- | 0 | | |

GENERAL PROPERTIES

| | | | |
|------------------------------------|--------|------------------------------------|-------|
| AFS* GFN | 38 | Shape | Round |
| Color | White | SiO ₂ (Silicon Dioxide) | >99% |
| Bulk Density (lb/ft ³) | 94 | Specific Gravity | 2.65 |
| Mineral | Quartz | | |

*American Foundry Society

NOVEMBER 2018

U. S. Silica Company

8490 Progress Drive, Suite 300
Frederick, MD 21701

(301) 682-0600 (phone)
(800) 243-7500 (toll-free)

ussilica.com

DISCLAIMER: The information set forth in this Product Data Sheet represents typical properties of the product described; the information and the typical values are not specifications. U.S. Silica Company makes no representation or warranty concerning the Products, expressed or implied, by this Product Data Sheet.

WARNING: The product contains crystalline silica - quartz, which can cause silicosis (an occupational lung disease) and lung cancer. For detailed information on the potential health effect of crystalline silica - quartz, see the U.S. Silica Company Safety Data Sheet.

