

Concrete Product Color Card

SOLOMON COLORS



These color chips represent approximate shades of Solomon Colors obtained using a gray portland and tan sand at 1 lb., 2 lbs., and 4½ lbs. of color per 100 lbs. of cement. Some selected colors have also been shown in mixes containing white sand at 1 lb. per 100 lbs. of cement. Shade variation from these colors may occur due to difference in local aggregates or cement. It is recommended that a pre-construction sample panel be made incorporating actual job site materials and construction methods in instances where color accuracy is critical. Many other colors can be obtained by using combinations of these colors and by changing the pigment weight per pound of cement. Color matching and development services are available by the Solomon Colors' Color Laboratory.

Note: Colors shown are for zero slump products. For slump product colors, please refer to the Solomon Colors' "Colors For Ready Mix Concrete" brochure. Use this chart as a guideline only. The colors below may not exactly represent the final color. Shade variations of cement and sand plus variations in the volume of water, the addition of admixtures and other additives may have an effect to the design mix and final color. We recommend that a test batch be made and approved prior to the start of the job.



2 lbs. 100 Light Buff



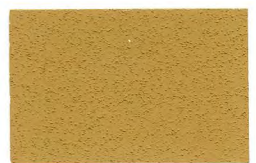
2 lbs. 125 Olive Buff



2 lbs. 200 Dark Buff



2 lbs. 275 Sand Tan



2 lbs. 288 Buff



4½ lbs. 100 Light Buff



4½ lbs. 125 Olive Buff



4½ lbs. 200 Dark Buff



4½ lbs. 275 Sand Tan



4½ lbs. 288 Buff



2 lbs. 140 Red



2 lbs. 300 Light Brown



2 lbs. 325 Golden Brown



2 lbs. 370 Deep Brown



2 lbs. 700 Orange



4½ lbs. 140 Red



4½ lbs. 300 Light Brown



4½ lbs. 325 Golden Brown



4½ lbs. 370 Deep Brown



4½ lbs. 700 Orange



2 lbs. 400 Red



2 lbs. 420 Dark Red



2 lbs. 440 Deep Red



2 lbs. 250 Copper Tan



2 lbs. 450 Maroon



4½ lbs. 400 Red



4½ lbs. 420 Dark Red



4½ lbs. 440 Deep Red



4½ lbs. 250 Copper Tan



4½ lbs. 450 Maroon



1 lb.* 413 Red



1 lb.* 415 Red



1 lb.* 417 Red



1 lb.* 489 Maroon Red



1 lb.* 920 Black



1 lb. 413 Red



1 lb. 415 Red



1 lb. 417 Red



1 lb. 489 Maroon Red



1 lb. 920 Black



2 lbs. 413 Red



2 lbs. 415 Red



2 lbs. 417 Red



2 lbs. 489 Maroon Red



2 lbs. 920 Black



4 1/2 lbs. 413 Red



4 1/2 lbs. 415 Red



4 1/2 lbs. 417 Red



4 1/2 lbs. 489 Maroon Red



4 1/2 lbs. 920 Black



1 lb.* 306 Brown



1 lb.* 336 Brown



1 lb.* 338 Brown



1 lb.* 385 Brown



1 lb.* 366 Utility Red



1 lb. 306 Brown



1 lb. 336 Brown



1 lb. 338 Brown



1 lb. 385 Brown



1 lb. 366 Utility Red



2 lbs. 306 Brown



2 lbs. 336 Brown



2 lbs. 338 Brown



2 lbs. 385 Brown



2 lbs. 366 Utility Red



4 1/2 lbs. 306 Brown



4 1/2 lbs. 336 Brown



4 1/2 lbs. 338 Brown



4 1/2 lbs. 385 Brown



4 1/2 lbs. 366 Utility Red

* Indicates colors obtained using white cement and white sand.



1 lb.* 238 Buff



1 lb.* 500 Green



1 lb.* 750 Goldenrod



1 lb.* 775 Mohawk Orange



1 lb. 238 Buff



1 lb. 500 Green



1 lb. 750 Goldenrod



1 lb. 775 Mohawk Orange



2 lbs. 238 Buff



2 lbs. 500 Green



2 lbs. 750 Goldenrod



2 lbs. 775 Mohawk Orange



4 1/2 lbs. 238 Buff



4 1/2 lbs. 500 Green



4 1/2 lbs. 750 Goldenrod



4 1/2 lbs. 775 Mohawk Orange



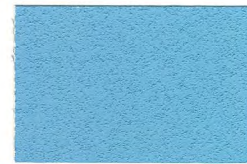
1 lb.* 253 Copper



1 lb.* 242 Copper



1 lb.* 115 Yellow



1 lb.* 66 Cobalt Blue



1 lb. 253 Copper



1 lb. 242 Copper



1 lb. 115 Yellow



1 lb. 66 Cobalt Blue



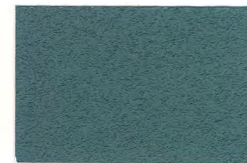
2 lbs. 253 Copper



2 lbs. 242 Copper



2 lbs. 115 Yellow



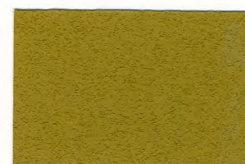
2 lbs. 66 Cobalt Blue



4 1/2 lbs. 253 Copper



4 1/2 lbs. 242 Copper



4 1/2 lbs. 115 Yellow



4 1/2 lbs. 66 Cobalt Blue

* Indicates colors obtained using white cement and white sand.

